



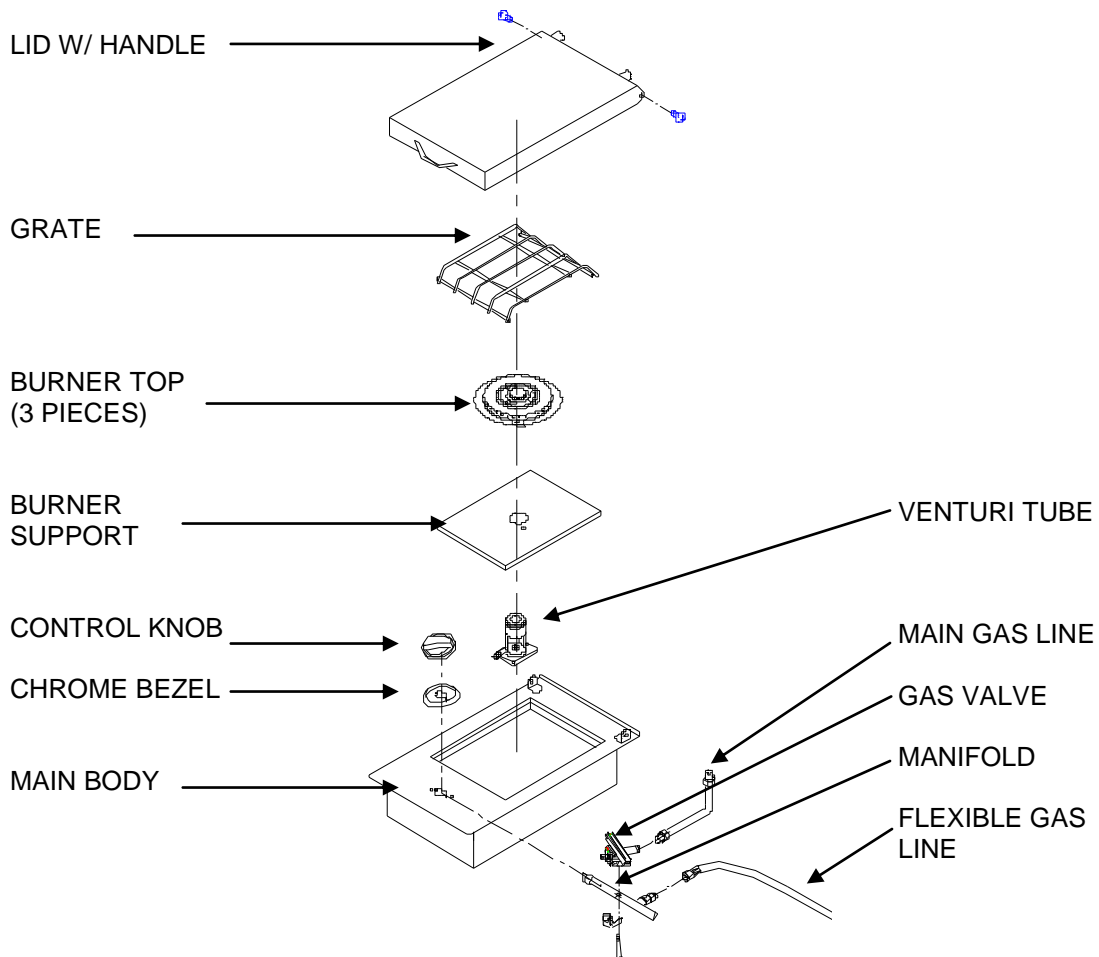
JACKSON GRILLS INC.
106-2480 Mt. Lehman Road
Abbotsford, BC V4X 2N3
TELEPHONE: (604)855-6756
FAX: (604)855-5373
SUPPORT: support@jacksongrills.com
WEB SITE: www.jacksongrills.com

THIS UNIT HAS BEEN SHIPPED AND PACKAGED FOR LP (PROPANE) FUEL ONLY. A NATURAL GAS ORIFICE IS SUPPLIED WITH THIS UNIT. PLEASE CONFIRM THE FUEL TYPE OF THE EXISTING GRILL BEFORE USING THIS SIDE BURNER.
TO CONVERT THIS UNIT TO NATURAL GAS: REMOVE THE GRATE AND BURNER TOPS. USING A SOCKET REMOVE THE ORIFICE AND REPLACE WITH NEW ORIFICE FOR FUEL TYPE REQUIRED.

SIDE BURNER INSTALLATION INSTRUCTIONS

PARTS INCLUDED:

- 1 SIDE BURNER COMPLETE
- 1 NATURAL GAS ORIFICE (NATURAL GAS USE ONLY)
- 1 STAINLESS STEEL FLEX HOSE



FOR INSTALLATION INTO CART MODEL GRILL SIDE SHELF:

STEP 1

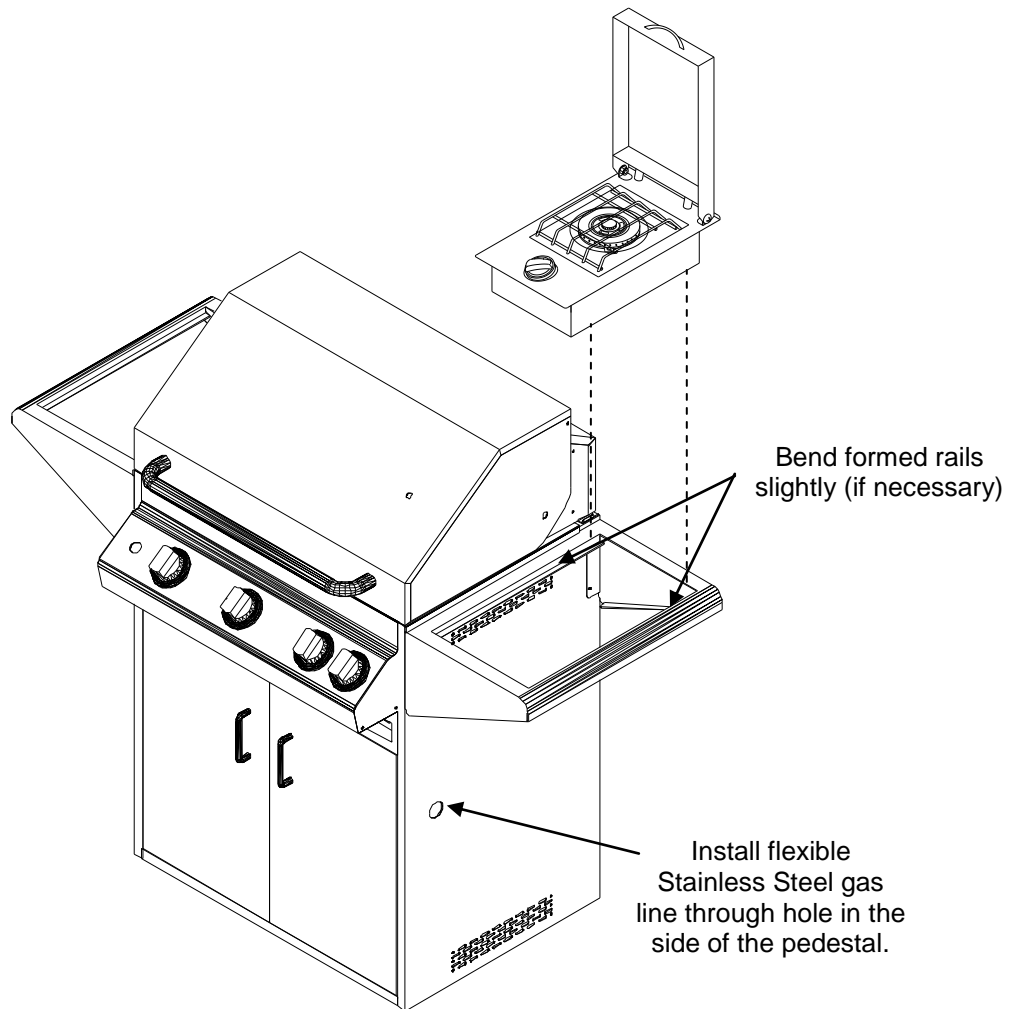
Remove the cutting board from the right hand side shelf (as you are facing the unit). This side burner cannot be installed on the left hand side of the unit, as it will come in contact with the rotisserie mounting bracket (if equipped).

STEP 2

The cutting board is supported by two formed rails in the side shelf. The side burner is a tight fit for movement purposes. These rails might have to be bent slightly to ensure installation of the side burner. Test fit the side burner before making any adjustments. If necessary, using a pair of pliers bend the rails down slightly to ensure the side burner will slide into the hole.

STEP 3

Slide the side burner into the hole where the cutting board once was.



STEP 4

Install the stainless steel flexible gas line onto the 3/8" flared connection on the gas manifold at the side burner. Slide the flexible gas line through the hole with the plastic grommet.

Open the cabinet doors of the pedestal base.

Turn the gas supply OFF. Disconnect the gas supply line from the flexible stainless steel line inside the pedestal. Install the fuel supply line to the remaining side of the tee.

STEP 5 NOTE: IMPORTANT

Please perform a gas leak test on all connections before the grill is lit. Using a liquid dish soap and water solution, spray or use a tooth brush and apply soap and water solution over all connections, if large bubbles are seen, tighten the connection and re-test. If a gas leak is detected and cannot be fixed please contact your local dealer for further assistance.

FOR INSTALLATION INTO BUILT IN CABINET:

STEP 1

Drop side burner unit into non-combustible hole in cabinet counter top.

STEP 2

From the underside, install the stainless steel flexible gas line onto the 3/8" flared connection on the underside of gas manifold at the side burner. Connect the other end of the flexible gas line onto the incoming 3/8" flared connection gas line.

STEP 3 NOTE: IMPORTANT

Please perform a gas leak test on all connections before the grill is lit. Using a liquid dish soap and water solution, spray or use a tooth brush and apply soap and water solution over all connections, if large bubbles are seen, tighten the connection and re-test. If a gas leak is detected and cannot be fixed please contact your local dealer for further assistance.

LIGHTING INSTRUCTIONS

1. Turn the main gas supply ON.
2. Depress the side burner control knob down slightly and turn **SLOWLY** counter clock wise until a click is heard, this assembly has a built in ignition system.
3. If the side burner does NOT light, turn the control knob to the OFF position and try again.
4. Once the burner has lit, turn the control knob counter clock wise to the desired position.

To turn the unit off, turn the gas control clockwise to the OFF position.